

POWERVAC 12

12kV Indoor Vacuum Switchgear

New generations of products from Motorpol Power Systems continue to provide the solution for your success. The new Motorpol POWERVAC 12 has been developed using the latest design and manufacturing techniques to meet the safety and reliability standards of tomorrow - today. Featuring a horizontally withdrawable vacuum circuit breaker, offering the versatility of modular design to give you what you want when you want it, with a wide range of ratings to suit your individual requirements.

Features:

- Versatile modular design
- Wide range of ratings
- Low maintenance Vacuum technology
- Proven reliability and safety
- Integral Earth Switch
- Front door can be closed with C.B. in isolated position
- All L.V. Wiring accessed from the front of unit
- Safety shutters
- Insulated bus bars throughout
- Electronic Micro Processor Based Protection Relays



Circuit breaker

The POWERVAC 12 circuit breaker is mounted on a wheeled truck to allow easy horizontal isolation and withdrawal. The circuit breaker uses vacuum interrupters operated by a trip free, motor charged spring mechanism. This gives long life and extreme reliability together with the proven performance of vacuum interrupters. Contact wear indication and automatic adjustment of contact pressure are provided as standards.

Enclosure

The POWERVAC 12 switch panel consists of a compartmentalised rigid steel enclosure housing the circuit breaker, bus-bars, current transformers, cables, instrumentation and protection relays. The enclosure has been designed, manufactured and tested in strict accordance to International Standard I EC-298. Local operation of the circuit breaker with the front door closed is one of the many enhanced safety features built into POWERVAC 12. Remote operation is also available.

The Circuit and bus-bar orifices are provided with safety shutters automatically operated by the entry/withdrawal of the circuit breaker. A fully interlocked integral fault making earth switch is provided as standard.

LEES TECHNOLOGY LTD.

Phone: 09 482 1093

Fax: 09 482 1094

Email: info@leestech.com

Web: www.leestech.com



TECHNICAL DATA (Complying with IEC 298 and IEC 56)

RATINGS

- Applicable Standards: IEC 56, 298, IS09001
- Rated Voltage: 12kV
- Normal current: 630A 1250A 2000A
- Short circuit Breaking Capacity: 25kA/3sec (44kA on request)
- Rated Impulse Withstand Voltage 75kV

CLOSING MECHANISM

- Motor charged spring operated.
- The mechanism is trip free.

TRIPPING

- DC Shunt

BUSBARS

- Single only, Rated normal current 800A, 1250A, 2000A.

CURRENT TRANSFORMERS

- Bartype: Tape insulated secondary over epoxy resin insulated primary

VOLTAGE TRANSFORMERS

- Circuit or busbar connected, isolation via removable HV fuses.
- Primary Winding encapsulated in silica filled epoxy resin.
- Output up to 200VA class 1 per phase.

CABLE BOX

- Cable boxes are suitable for dry-type cable termination for 1-3 core, 2-3 core or 6 single core cables.

CLOSING TIME

- 50 ms approx

FINAL CLEARANCE TIME

- 45 ms approx.

DEGREE OF PROTECTION

- 1P4X

FINISH

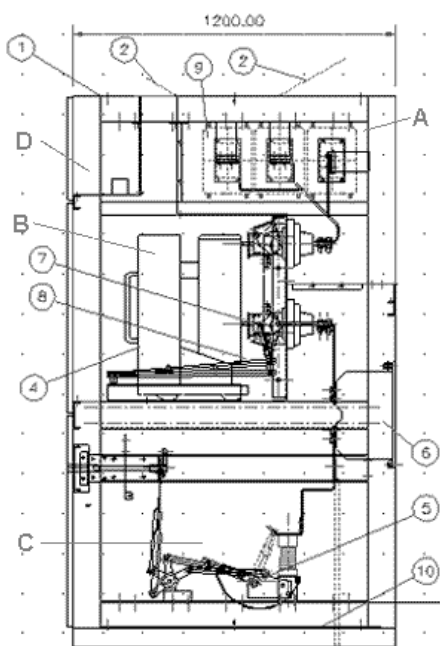
- RAL 7032 Grey

APPROX. WEIGHT

- Circuit Breaker: 120kg
- Enclosure: 405kg

QUALITY ASSURANCE

- Motorpol Power Systems are ISO9001 quality accredited through BVQI, London. Our Auckland factory is equipped with Production and Test equipment to IEC298 covering indoor and outdoor rated voltages 1 kV to 52kV.



- A - Busbar Compartment
- B - Circuit Breaker Compartment
- C - Cable Compartment
- D - Instrument Compartment
- 1 - LV Cable Entry
- 2 - Pressure Discharge Flap
- 4 - Vacuum Circuit Breaker
- 5 - Earth Switch
- 6 - CT
- 7 - Contact Shroud
- 8 - Safety Shutters
- 9 - Bushing Plate
- 10 - Bottom Cable Entry/Gland Plate

Due to our policy of Continuous Product Development, specifications are subject to change without notice.